



## CLASSIC XBAR RGB

HOMOGENEOUS AND POWERFUL RGB LED LIGHTING BAR

► MACHINE VISION APPLICATIONS    ► LED LIGHTING SYSTEM    ► HIGH POWERFUL LED    ► VERSATILE LIGHTING    ► 7 COLOURS    ► SOLID BODY

## MULTI-COLOURS LIGHTING SOLUTION BOTH VERSATILE AND EFFICIENT



**M12 CONNECTOR**

8 POLES

**SOLID BODY**

COLOURLESS ANODIZED  
ALUMINUM

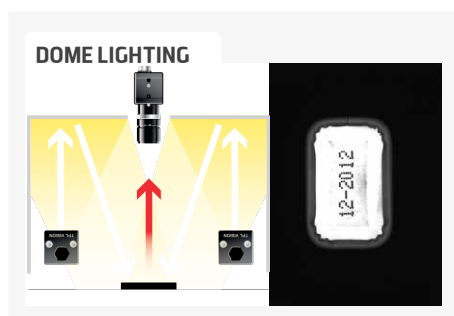
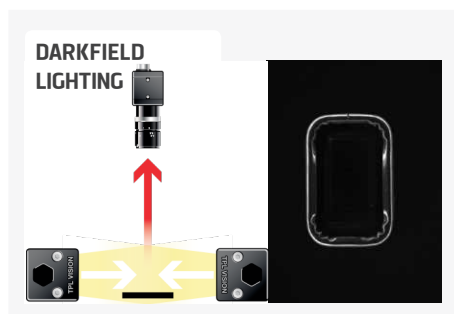
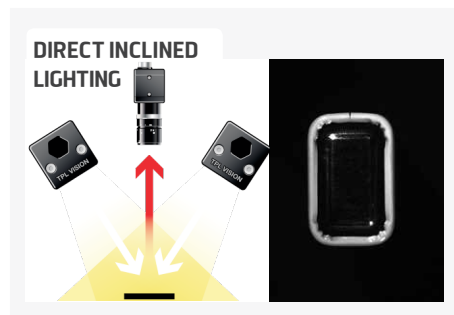
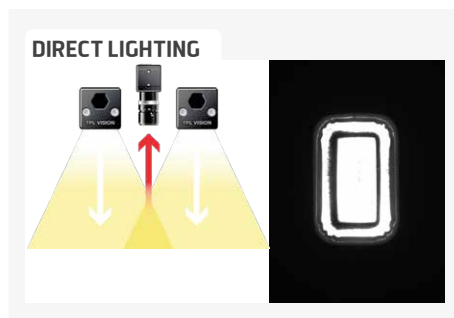
- ✓ High powerful lighting,
- ✓ continuous or strobe mode,
- ✓ drive 7 colours.

The XBAR RGB offers an homogeneous and powerful lighting, available in different colours. It is a versatile product, very useful if there is a large diversity of colours, forms or materials to control. The XBAR RGB gives the opportunity to select between 7 colours : white, red, green, blue, cyan, purple, yellow (3 opto-coupled inputs).

Generally used by 2 or 4, the lights can be set in a camera's collinear axis. In case of reflection, they can be either orientated with an angle of 45° or used with polarising filters. For very large areas, you can

also create a matrix of 4 modules so as to get the required power and homogeneity. The XBAR RGB is equipped with a solid body made of anodized aluminum, and can work in continuous or strobe mode.

The XBAR RGB is recommended in the robotic field, especially in the palettization process, and also in the packaging process (cosmetic and food industry), where the product's colours and materials may regularly change.



## TECHNICAL SPECIFICATIONS

	5	10	15
Electronics			
Power supply	24 VDC ±10%		
Max. Consumption (W) (WHI, 630,525,470)	15	30	45
Max. Consumption (W) (850)	5	10	15
Functioning mode	Continuous or strobe according to wiring		
Working mode	• Continuous if 1 colour • 5 s duty cycle 20% if 2 colours • 2 s duty cycle 10% if 3 colours		
Strobe voltage	TTL or PLC		
Maximum power in the Led	350 mA/colour		
Strobe signal frequency	300 Hz		
Maximum rising time	1.5 ms		
Maximum falling time	1 ms		
Wiring	M12 8 poles male connector		
Colour	RGB (Red, Green, Blue)		
Number of Leds	5	10	15
Lens by default	± 10°		
Mechanics			
Total length (mm)	222	372	522
Width x thickness	47 x 47 mm		
Useful length (mm)	150	300	450
Useful width (mm)	39		
Weight (g)	300	460	680
Body materials	Colourless anodized aluminum		
Diffuser	Transparent, opaque or satin diffuser		
Fixing	2 M8 nuts to insert in the groove located on the back of the lighting		
Included add-ons	2 M8 nuts		
Environment			
Operating temperature	0 - 40°C		
Storage temperature	0 - 60°C		
IP protection	IP 40 (in option : IP65 and IP69K*)		
Labels	RoHS-CE-WEEE		

### \* IP69K OPTION



## HOW TO BUILD YOUR REFERENCE

REQUIRED SETTINGS				OPTION	
XBAR	NUMBER OF LEDS	COLOUR	OPTIC ANGLE	DIFFUSER OPTION	IP OPTION
	5	RGB	10 $\pm 10^\circ$	DT TRANSPARENT	IP40 RATED
	10		NL NO LENS	DO OPAQUE	IP65 IP65 RATED
	15			DS SATIN	IP69K IP69K RATED

#### EXAMPLES :

XBAR 5 LEDS RGB  $\pm 10^\circ$  OPAQUE DIFFUSER IP40 :

XBAR 15 LEDS RGB NO LENS TRANSPARENT DIFFUSER IP65 :

#### RESULTS :

→ XBAR5-RGB-10-DO

→ XBAR15-RGB-NL-DT-IP65

ACCESSORIES

Mounting accessory for camera



Ref: TPL-MOUNT-BAR-H1

Mounting accessory for camera



Ref: TPL-MOUNT-BAR-V1

Mounting accessory




Ref: BMOUNT

Mounting accessory



Ref: SWIVEL-MOUNT

M12 female – 8 pins cable



2 meters	Ref: C-M12-8P-2M
5 meters	Ref: C-M12-8P-5M
10 meters	Ref: C-M12-8P-10M

Safety glasses



Ref: EYE-PROTECT

Features and presentations liable to modifications without prior notice. Ref.TS-010701-B2, 2024/01 Edition