

## DIFFUSE HIGH POWER LED LIGHT FOR FOOD INDUSTRY.

### ADVANTAGES OF THE BLBAR FOOD

- ✓ Resists to **washing pressure** up to **100 bars**
- ✓ Faces **water temperatures** up to **80° C**
- ✓ **Reduces bacterium accumulation** thanks to smooth surfaces
- ✓ **Avoids steam appearance** during thermal variations
- ✓ **Integrated cables** (5m)



Compliant with the food industry requirements, the Backlight BLBAR FOOD is a high power LED lighting solution, both diffuse and homogeneous. Equipped with a transparent tube, the Backlight BLBAR FOOD has a high protection level (IP69K) and perfectly fits production lines submitted to intense cleanings, where liquid and solid spatters are frequent.

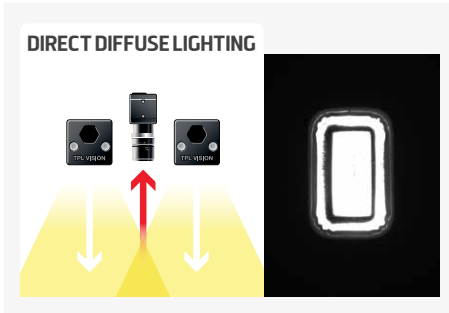
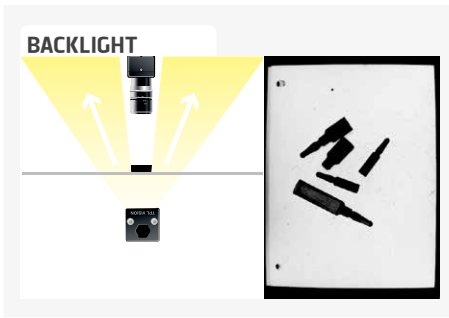
The Backlight BLBAR FOOD resists to washing pressure up to 100 bars, copes with water temperatures up to 80°C and avoids

steam appearance. Fully immersed, the transparent tube doesn't degrade the lighting quality. Thank to the Backlight BLBAR FOOD, power and homogeneity are perfectly preserved, for an optimized quality control.

Available in different colours and in multiple lengths, it can work either in continuous or in strobe mode.

	Surface lighting	
<b>BLBAR5</b>	50000 lux	121 x 39 mm
<b>BLBAR10</b>	50000 lux	246 x 39 mm
<b>BLBAR15</b>	50000 lux	371 x 39 mm
<b>BLBAR20</b>	50000 lux	496 x 39 mm
<b>BLBAR25</b>	50000 lux	621 x 39 mm
<b>BLBAR30</b>	50000 lux	746 x 39 mm
<b>BLBAR35</b>	50000 lux	871 x 39 mm
<b>BLBAR40</b>	50000 lux	996 x 39 mm
<b>BLBAR45</b>	50000 lux	1121 x 39 mm
<b>BLBAR50</b>	50000 lux	1246 x 39 mm

Minimum guaranteed values (white lighting measures)



## TECHNICAL SPECIFICATIONS

	5	10	15	20	25	30	35	40	45	50
<b>Electronics</b>										
Power supply	24 VDC ±10%									
Functioning mode	Continuous or strobe according to wiring									
Maximum rising time	1.5ms									
Maximum falling time	1ms									
Bar wiring	Cable 5 meters – 4 wires									
Tube wiring	Cable 5 meters – 2 wires									
Max. Consumption (W)	7,5	15	22,5	30	37,5	45	52,5	60	67,5	75
<b>Optics</b>										
Colour	White, Red, Green, Blue, Infrared									
Number of Leds	5	10	15	20	25	30	35	40	45	50
<b>Mechanics</b>										
Total length (mm)	306	431	556	681	806	931	1056	1181	1306	1431
Tube diameter (mm)	80									
Useful length (mm)	121	246	371	496	621	746	871	996	1121	1246
Useful width (mm)	39									
Weight (kg)	2,85	3,26	3,67	4,08	4,49	4,9	5,31	5,72	6,13	6,54
Bar body materials	Colourless anodized aluminum									
Tube materials	Tube : plexiglas / Fixing : stainless steel 316L									
Diffuser	Opaque diffuser									
<b>Environment</b>										
Operating temperature	-20°C / +60°C									
Storage temperature	0°C / +60°C									
IP protection	IP69K									
Labels	RoHS-CE-WEEE									

## RELATED PRODUCTS



## HOW TO BUILD YOUR REFERENCE

REQUIRED SETTINGS			
BLBAR	NUMBER OF LEDS	COLOUR	IP
	5	WHI <input type="checkbox"/>	IP69K IP69K RATED
	10	630 <input type="checkbox"/>	
	15	525 <input type="checkbox"/>	
	20	470 <input type="checkbox"/>	
	25	850 <input type="checkbox"/>	
	30		
	35		
	40		
	45		
	50		
		<b>EXAMPLES:</b>	<b>RESULTS:</b>
		BLBAR 5 WHITE LEDS IP69K RATED: →	BLBAR5-WHI-IP69K
		BLBAR 15 RED LEDS IP69K RATED: →	BLBAR15-630-IP69K
		BLBAR 30 BLUE LEDS IP69K RATED: →	BLBAR30-470-IP69K

Features and presentations liable to modifications without prior notice. Ref.TS-070101-A2, 2019/12 Edition.

### TPL VISION UK

Brenchley House - School Road - Charing - Kent TN27 0JW - UK  
Tel. +44 (0)1738 310 392 - contact@tpl-vision.co.uk

[www.tpl-vision.com](http://www.tpl-vision.com)



#### Other available documents :

- PDF, DWG, DXF, IGS, STEP & X\_Y DRAWINGS
- USER'S GUIDE

Backlight BLBAR FOOD

