

ESSENTIAL EBAR UV

EASY TO USE & POWERFUL LED LIGHTING BAR

▷ HIGH POWERFUL LED BAR

▷ ULTRAVIOLET LIGHTING

▷ OPTICAL BRIGHTENER

▷ QUALITY CONTROL WITH CAMERA

▷ MACHINE VISION SYSTEM

SIMPLICITY
LEADING TO **POWER.**



LIGHTING: **UV**

- ✓ High powerful lighting,
- ✓ UV leds 405 nm,
- ✓ from 15 cm to 1 m 30.

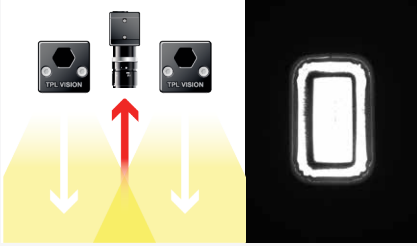
The Essential EBAR UV is a direct lighting, equipped with high powerful 405 nm UV leds. Either settled upward or downward, the Essential EBAR UV can perfectly light rectangular areas of any size: from 12 cm up to 1m30 length. It is obviously the essential lighting for the detection of UV optical brighteners (glue, paint, UV reagents).

The Essential EBAR UV is very simple to fix: nothing to adjust, you just have to plug it, and it will automatically light. Then, you can either choose the continuous mode or the strobe mode.

UV INFO

In the light spectrum, UV (ultra violet) rays are electromagnetic radiations situated between 280 and 400 nm (visible radiations: between 400 and 800 nm). What makes UV very interesting is the fact that, even if it is invisible for the naked eye, it can be observed by fluorescence: when some bodies are submitted to UV wavelengths, they emit a visible light. This is the principle of black light and of counterfeit notes detection. TPL Vision only uses UV belonging to the UV-A range (between 315 and 400 nm).

DIRECT LIGHTING



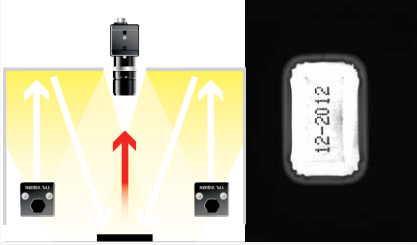
DIRECT INCLINED LIGHTING



DARKFIELD LIGHTING



DOMELIGHTING



RELATED PRODUCTS

Ask for your add-ons, customized for the Essential EBAR UV 405 :

- wiring
- fixing hardware
- safety glasses

* IP69K OPTION



TECHNICAL SPECIFICATIONS

	5	10	15	20	25	30	35	40	45	50
Electronics										
Power supply	24 VDC +/-10%									
Functioning mode	Continuous or strobe according to wiring									
Maximum rising time	1.5 ms									
Maximum falling time	1 ms									
Wiring	M12 4 poles male connector									
Max. Consumption (W)	7.5	15	22.5	30	37.5	45	52.5	60	67.5	75
Optics										
Colour	UV 405									
Number of Leds	5	10	15	20	25	30	35	40	45	50
Lens by default	± 10°									
Mechanics										
Total length (mm)	153	278	403	528	653	778	903	1028	1153	1278
Width x thickness (mm)	47 x 47									
Useful length (mm)	121	246	371	496	621	746	871	996	1121	1246
Useful width (mm)	39									
Weight (g)	329	516	703	890	1077	1264	1451	1638	1825	2012
Body materials	Colourless anodized aluminum									
Diffuser	Satin diffuser									
Fixing	2 M8 nuts to insert in the groove located on the back of the lighting									
Included add-ons	2 M8 nuts									
Environment										
Operating temperature	0 - 40°C									
Storage temperature	0 - 60°C									
IP protection	IP 40 (in option : IP65 and IP69K*)									
Labels	RoHS-CE-DEEE									

HOW TO BUILD ONE'S REFERENCE

REQUIRED SETTINGS				OPTION
EBAR	NUMBER OF LEDS	COLOUR	LENS/OPTIC ANGLE	IP OPTION
	5	405	7 ± 7°	IP40 RATED
	10		10 ± 10°	IP65 IP65 RATED
	15		9-16 ± 9°/16°	IP69K* IP69K RATED
	20		17 ± 17°	
	25		25 ± 25°	
	30		NL NO LENS	
	35			
	40			
	45			
	50			
EXAMPLES			RESULTS	
EBAR 5 LEDS UV 405 ± 10° IP40 RATED:			→ EBAR5-405-10	
EBAR 15 LEDS UV 405 ± 17° IP69K RATED:			→ EBAR15-405-17-IP69K	
EBAR 30 LEDS UV 405 ± 9°/16° IP65 RATED:			→ EBAR30-405-9-16-IP65	
<p>INFORMATION ABOUT LENSES NARROW ANGLE = GIVE PRIORITY TO LIGHTING POWER WIDE ANGLE = GIVE PRIORITY TO HOMOGENEITY AND WIDE AREA</p>				
<p>TO LIGHT HOMOGENEOUS WIDE AREA → ANGLE ← TO GET BETTER LIGHTING POWER</p>				

Features and presentations liable to modifications without prior notice. B-1 version, 2014/03 Edition

TPL VISION – 20 rue de Saint Philbert – 44118 LA CHEVROLIÈRE
 Tél. + 33 2 40 56 10 99 – Fax. + 33 2 40 56 42 89
www.tpl-vision.net



Other available documents :

- PDF, DWG, DXF, IGS, STEP & X_Y DRAWINGS
- USER'S GUIDE

EBAR UV 405

