

▷ QUALITY CONTROL WITH CAMERA ▷ MACHINE VISION SYSTEM ▷ HIGH POWERFUL LED ▷ ULTRA-THIN BORDERS ▷ HOMOGENEOUS LIGHTING SYSTEM

HIGH POWER BACKLIGHT

COMPATIBLE WITH EXTERNAL CONTROLLER



HIGH POWER LIGHTING ✓

ROBUST MECHANICAL DESIGN ✓

OPTIMISED HEATSINK DESIGN ✓
for continuous & strobing applications

CUSTOM SIZES ✓
1 CM STEPS

CABLE 4 WIRES

Compatible with the **TPL-CONTROL-1**

HPBACK External Controller

		LENGTH		
		200	300	400
WIDTH	200	✓	✓	✓
	300		✓	

LIGHTING METHOD

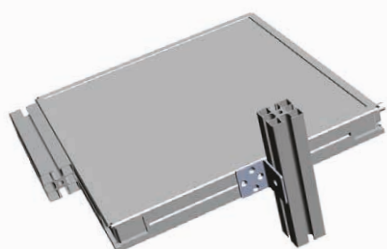
TECHNICAL SPECIFICATIONS

HPBACK External Control

Electronics	
Drive Requirement	TPL-CONTROL-1-M/S or other external constant current driver
Internal Current Regulation	None
Input Type	Passive LED load / unregulated LED array
Nominal Forward Voltage	See user manual for colour & current specific forward voltage
Drive Current Range	350 mA continuous mode, up to 2.5A strobe mode per 100x100mm region
Peak Power	Depends on peak current. Approx. peak power = $V_f \times I_{peak}$
Functioning Mode	Output controlled by external driver current and/or PWM/strobe signal
Rise and Fall Time	Determined by external controller, cable length and drive conditions
Wiring	2x LED+ / 2x LED- (Wires embedded on product)
Protection	No internal over-current protection
Optics	
Colour	White (6500k), Red (630nm) and Infrared (850nm) – Other colours: please contact us
Mechanics	
Thickness	45mm
Weight	23.2 Kg/m ² ±15%
Materials	Aluminum and loaded ABS
Diffuser	White PMMA
Fixing	4 M4 nuts (supplied) to insert in the groove or 4 M4x20 screws (not supplied) applied to the corner slots
Environment	
Operating temperature	-10° C to +40° C / 80% of humidity without condensation / No thermal shock (maximum temperature variation: 10 DegC in 24h)
Storage temperature	-20° C to +60° C / 80% of humidity without condensation / No thermal shock (maximum temperature variation: 10 DegC in 24h)
IP protection	IP 50
Information	
Labels	RoHS / CE / UKCA / WEEE
Country of Origin	Made in France
Tariff Number	94054990

EXTRAS

Light mounting bracket



Ref: TPL-MOUNT-HPB-SQUARE1

Safety glasses




Ref: EYE-PROTECT

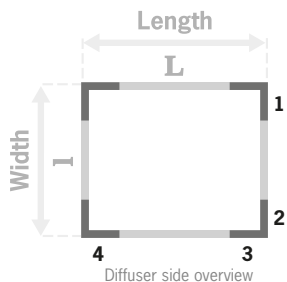
HOW TO BUILD YOUR REFERENCE

HPB	VERSION	L LENGTH (CM)	W WIDTH (CM)	COLOUR	WIRING 1				
	EC				20	20	WHI	TYPE	POSITION
					30	30	630	A CABLE 2.5 m	1
					40		850		2

The first figure shall always be the biggest one.

OTHER COLOURS  Please contact us.

REFERENCE EXAMPLES	
HPBACK External Control 40x20 cm white LEDs Cable 2.5 meters in position n°4 : ➔ HPB-EC-4020-WHI-A4	
HPBACK External Control 30x30 cm red LEDs Cable 2.5 meters in position n°1 : ➔ HPB-EC-3030-630-A1	

POSITION CHOICE	
 <p>Diffuser side overview</p>	

TPL VISION IS EXTREMELY CAREFUL ABOUT BIN SORTING IN THE SELECTION OF LEDs FOR THEIR PRODUCTS.

The human eye is particularly sensitive to color variations. Two products of the same color may appear different in the eyes of the user. However, **the maximum variation of the wavelength DOES NOT EXCEED 10 NM.**

Here are the following bandpass camera filters we recommend:

- White LEDs: no filter required
- Red LEDs: BP 635 (<http://midopt.com/filters/bp635/>)
- Infrared LEDs: LP 830 (<http://midopt.com/filters/lp830/>)

We advise using bandpass filters from MidOpt: www.midopt.com

More information

www.tpl-vision.com

Features and presentations liable to modifications without prior notice. Ref.TS-020302-A1, 2026/06 Edition.

TPL VISION UK

Brenchley House - School Road - Charing - Kent TN27 0JW - UK
Tel. +44 (0)1738 310 392 - contact@tpl-vision.co.uk

High Power HPBACK

