

## HIGH POWER HPRING

HIGH POWERFUL RING - 12 LEDS

▷ LED RING LIGHT

▷ MACHINE VISION APPLICATIONS

▷ HIGH POWERFUL LED

▷ DIRECT LIGHTING

▷ QUALITY CONTROL WITH CAMERA

▷ SOLID BODY

## POWERFUL DIRECTIVE LIGHTING, ADAPTED TO MOST CAMERAS.

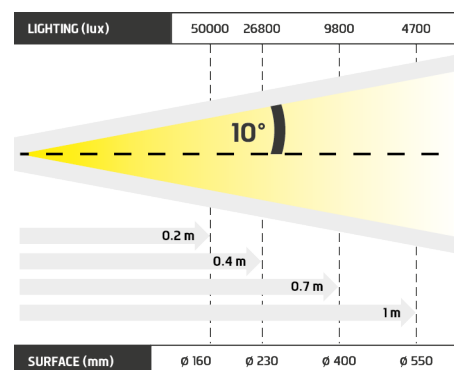


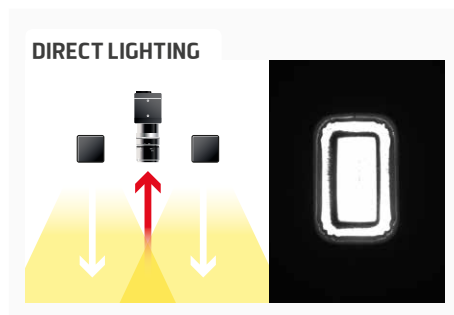
- ✓ 12 high powerful leds,
- ✓ continuous and strobe modes,
- ✓ fits the biggest cameras.

The HPRING is a solid ring, equipped with 12 high powerful leds, very useful for the directive lighting of a circular area. Among TPL Vision's products range, it definitely appears to be one of the most powerful lightings. At a distance of 1m, the standard version of the HPRING can light up a circular area of 550mm. Its large internal diameter make it compatible with the largest camera's objectives. The HPRING reveals all its potential in the field of robotics (for example, to locate the products during the packing process) and also in the field of quality control.

Distance	0.2m		0.4m		0.7m		1m	
<b>HPRING</b>	50000 lux	ø 160 mm	26800 lux	ø 230 mm	9800 lux	ø 400 mm	4700 lux	ø 550 mm

Minimum guaranteed values (white lighting measures)





## TECHNICAL SPECIFICATIONS

Electronics	
Power supply	24 VDC $\pm 10\%$
Functioning mode	Continuous or strobe according to wiring
Maximum rising time	1.5ms
Maximum falling time	1ms
Wiring	M8 3 poles male connector
Max. Consumption	15 W
Optics	
Colour	White, Red, Green, Blue, Infrared (UV 405 available)
Number of Leds	12
Standard lens	$\pm 10^\circ$
Mechanics	
Dimensions	$\varnothing$ Int : 58 mm - $\varnothing$ Ext : 112 mm
Width	28 mm
Weight (g)	400
Materials	Black anodized aluminum
Diffuser	Transparent diffuser
Fixing	4 M3 screws
Environment	
Operating temperature	0 - 40°C
Storage temperature	0 - 60°C
IP protection	IP 40
Information	
Labels	RoHS / CE / UKCA / WEEE
Country of Origin	Made in France
Tariff Number	94054990

## HOW TO BUILD YOUR REFERENCE

REQUIRED SETTINGS

HPRING	COLOUR	OPTIC ANGLE	DIFFUSER	IP OPTION
WHI		7 $\pm 7^\circ$	DT TRANSPARENT	IP40 RATED
630		10 $\pm 10^\circ$	DO OPAQUE	IP65 RATED
525		17 $\pm 17^\circ$	DS SATIN	
470		25 $\pm 25^\circ$	POL POLARISER*	
850		NL NO LENS		

**EXAMPLES :**  
HPRING WHITE LED  $\pm 10^\circ$  OPAQUE DIFFUSER IP40 RATED: → HPRING-WHI-10-DO  
HPRING RED LED  $\pm 17^\circ$  TRANSPARENT DIFFUSER IP65 RATED: → HPRING-630-17-DT-IP65  
HPRING BLUE LED  $\pm 25^\circ$  POLARISER IP40 RATED: → HPRING-470-25-POL

OPTION

\* EXCEPT FOR INFRARED 850

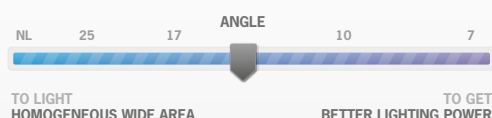
IT IS STRONGLY ADVISED TO USE THE HPRING IN **STROBE MODE** TO PROLONG THE LIFETIME OF THE MATERIAL.

POLARISERS ARE **NOT COVERED** BY WARRANTY.

**INFORMATION ABOUT LENSES**

**NARROW ANGLE** = GIVE PRIORITY TO LIGHTING POWER

**WIDE ANGLE** = GIVE PRIORITY TO HOMOGENEITY AND WIDE AREA



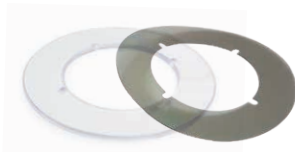
## ACCESSORIES

### M8 female – 3 pins cable



<b>2 meters</b>	Ref: C-M8-3P-2M
<b>5 meters</b>	Ref: C-M8-3P-5M
<b>10 meters</b>	Ref: C-M8-3P-10M

### Diffusers & Polariser



<b>Opaque diffuser</b>	Ref: DO-HPRING
<b>Satin diffuser</b>	Ref: DS-HPRING
<b>Transparent diffuser</b>	Ref: DT-HPRING
<b>Polariser</b>	Ref: POL-HPRING

### Safety glasses



Ref: EYE-PROTECT

## MOUNTING DEVICES

### LRMOUNT V1



Ref: LRMOUNT V1

### LRMOUNT V2



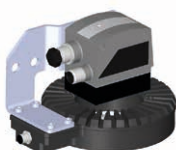
Ref: LRMOUNT V2

### LRMOUNT V3



Ref: LRMOUNT V3

### LRMOUNT V4



Ref: LRMOUNT V4

### LRMOUNT V5



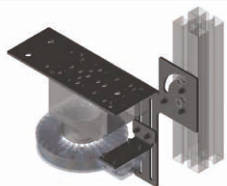
Ref: LRMOUNT V5

### LRMOUNT V6



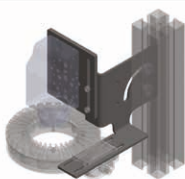
Ref: LRMOUNT V6

### TPL-MOUNT-HPRING-H1



Ref: TPL-MOUNT-HPRING-H1

### TPL-MOUNT-HPRING-V1



Ref: TPL-MOUNT-HPRING-V1

**FOR CAMERA COMPATIBILITY, PLEASE VISIT OUR WEBSITE AT:**  
[www.tpl-vision.com/product-category/accessories/](http://www.tpl-vision.com/product-category/accessories/)

Features and presentations liable to modifications without prior notice. Ref.TS-030101-C5 version, 2025/04 Edition.

#### TPL VISION UK

Brenchley House - School Road - Charing - Kent TN27 0JW - UK  
 Tel. +44 (0)1738 310 392 - [contact@tpl-vision.co.uk](mailto:contact@tpl-vision.co.uk)

[www.tpl-vision.com](http://www.tpl-vision.com)



#### Other available documents :

- PDF, DWG, DXF, IGS, STEP & X\_Y DRAWINGS
- USER'S GUIDE

**High Power HPRING**

