

## POLARISERS

FOR TPL VISION LED ILLUMINATIONS

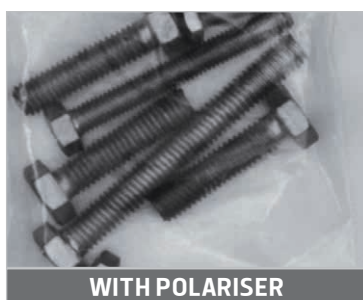
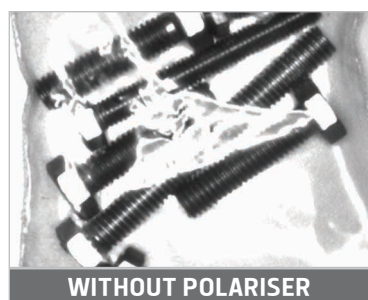
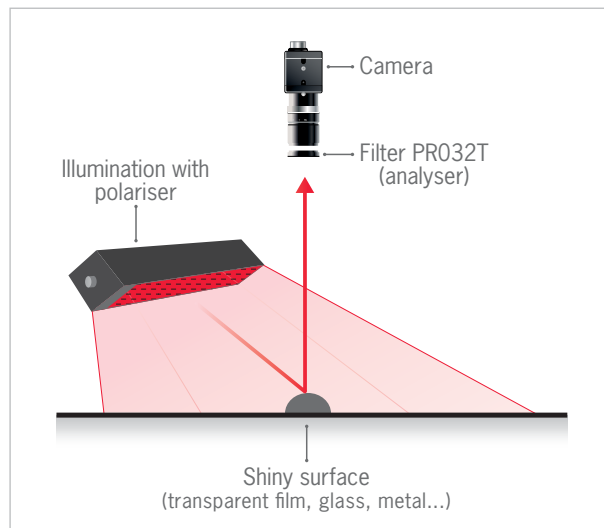
### THANKS TO THE POLARISER FILM, DELETE ALL SHINY EFFECTS

Set between the LED and the diffuser, the polariser helps to delete the reflection of the illumination on the workpieces to be controlled.

The camera, equipped with a polariser filter PR032T, a.k.a analyzer, can then start the analysis of the parts, without being disturbed by shiny effects.

Polariser films can be very useful for machine vision systems that process workpieces packed in transparent plastic bags.

The polariser is available for the visible wavelengths, UV (>400nm) and IR (<900nm). They will reduce the lighting power by about 50%.



### BAR RANGE



- ✓ Delete shiny effects,
- ✓ available in several dimensions,
- ✓ to be inserted under the enclosed transparent diffuser.

#### REFERENCE BUILDER

POLARISER	BAR	DIMENSION
POL POLARISER*		125
		250
		375
		500
		625
		750
		875
		1000
		1125
		1250
		1500
		1750

\* EXCEPT FOR INFRARED 850

IT IS STRONGLY ADVISED TO USE THE BAR IN **STROBE MODE** TO PROLONG THE LIFETIME OF THE MATERIAL.

POLARISERS ARE **NOT COVERED** BY WARRANTY.

## HPRING



### REFERENCE BUILDER

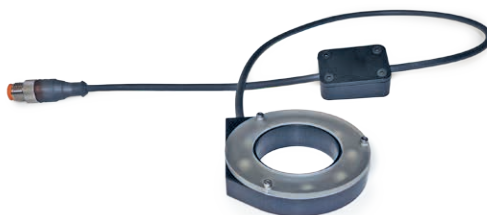


#### EXAMPLE :

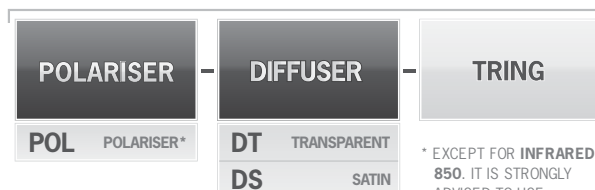
Polariser for HPRING  
⇒ **POL-HPRING**

\* EXCEPT FOR **INFRARED 850**. IT IS STRONGLY ADVISED TO USE THE BAR IN **STROBE MODE** TO PROLONG THE LIFETIME OF THE MATERIAL. POLARISERS ARE **NOT COVERED** BY WARRANTY.

## TRING & TINY'Z



### REFERENCE BUILDER



#### EXAMPLE :

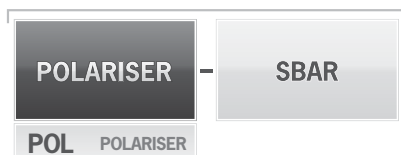
Polariser for TRING with satin diffuser  
⇒ **POL-DS-TRING**

\* EXCEPT FOR **INFRARED 850**. IT IS STRONGLY ADVISED TO USE THE BAR IN **STROBE MODE** TO PROLONG THE LIFETIME OF THE MATERIAL. POLARISERS ARE **NOT COVERED** BY WARRANTY.

## SBAR



### REFERENCE BUILDER



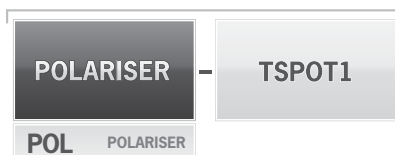
#### EXAMPLE :

Polariser for SBAR  
⇒ **POL-SBAR**

## TSPOT1 & THINLED1



### REFERENCE BUILDER



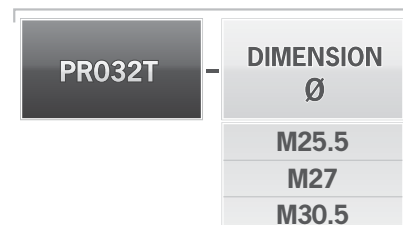
Polariser for TSPOT1 ⇒ **POL-TSPOT1**

## FILTRES PRO32T



Little screw to lock the polariser after focus

### REFERENCE BUILDER



#### EXAMPLE :

Filter diameter 25.5mm ⇒ **PRO32T-M25.5**

Features and presentations liable to modifications without prior notice. Ref.TS-100701-A7, 01/2024 Edition.

### TPL VISION UK

Brenchley House - School Road - Charing - Kent TN27 0JW - UK  
Tel. +44 (0)1738 310 392 - contact@tpl-vision.co.uk

[www.tpl-vision.com](http://www.tpl-vision.com)

**Diffusers**

