



SPOT SBAR UV 365 & UV 385

EASY TO USE POWERFUL LIGHTING SPOT

▷ HIGH POWERFUL SPOT LIGHT

▷ ULTRAVIOLET LIGHTING

▷ UV365 & UV385

▷ GLUE AND PAINT DETECTION

▷ QUALITY CONTROL WITH CAMERA

A VERY POWERFUL SPOT IN A BAR SHAPE.

SOLID BODY
COLOURLESS ANODIZED
ALUMINUM

LIGHTING: UV
365 nm or 385 nm

- ✓ Compact spotlight,
- ✓ powerful lighting,
- ✓ easy to use.



M12 CONNECTOR

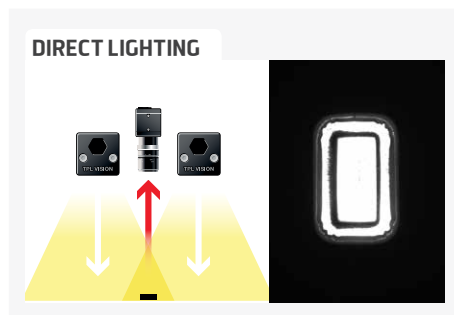
**Integrated
current control
power supply**

The Spot SBAR UV 365 (or UV 385) is a high powerful spot that can be easily fixed, thank to the groove located in the back of the body, just as you would do for a bar. Equipped with a 365 nm UV led (or a 385 nm UV led), it can perfectly light circular areas, including in places where the size is a real constraint.

The Spot SBAR UV 365 (or UV 385) is very useful to highlight any kind of product that reacts with ultraviolet light (glue, paint...). Thanks to this spot, you can easily control assembly defects, highlight materials lacks, and also read UV markings.

UV-INFO

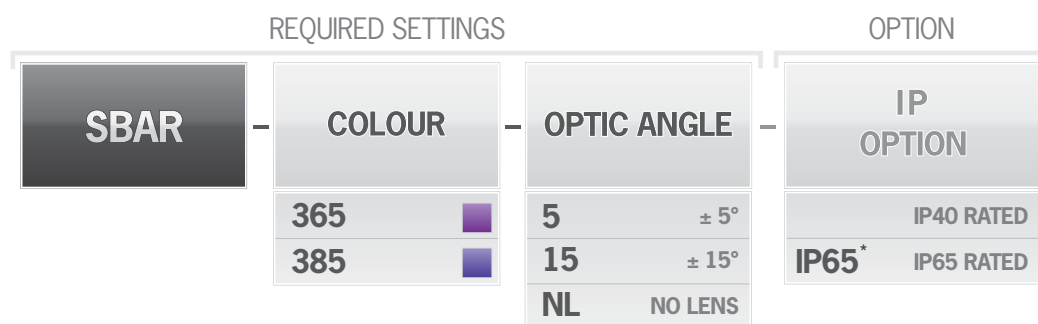
In the light spectrum, UV (ultra violet) rays are electromagnetic radiations situated between 280 and 400 nm (visible radiations: between 400 and 800 nm). What makes UV very interesting is the fact that, even if it is invisible for the naked eye, it can be observed by fluorescence: when some bodies are submitted to UV wavelengths, they emit a visible light. This is the principle of black light and of counterfeit notes detection. TPL Vision only uses UV belonging to the UV-A range.



TECHNICAL SPECIFICATIONS

Electronics	
Power supply	24V $\pm 10\%$
Functioning mode	Continuous or strobe according to wiring
Maximum rising time	1.5 ms
Maximum falling time	1 ms
Wiring	M12 4 poles male connector
Max. Consumption	2 W
Optics	
Colour	UV 365 or UV 385
Standard lens	$\pm 15^\circ$
Mechanics	
Dimensions	47 x 47 x 75 mm
Useful surface	45 x 35 mm
Weight	200 g
Materials	Colourless anodized aluminum
Diffuser	Transparent diffuser
Fixing	2 M8 nuts to insert in the back groove
Included add-ons	2 M8 nuts
Environment	
Operating temperature	0 - 40°C
Storage temperature	0 - 60°C
IP protection	IP 40
Labels	RoHS-CE-WEEE

HOW TO BUILD YOUR REFERENCE



EXAMPLES

SBAR LED UV 365 $\pm 5^\circ$ IP40 RATED: → SBAR-365-5

SBAR LED UV 365 $\pm 15^\circ$ IP65 RATED: → SBAR-365-15-IP65

RESULTS



* Performance of IP65 Version of the product is different to IP40 rated version. Testing of the IP65 product via the free loan service is advised to assess suitability for your application.

ACCESSORIES

Mounting accessory for camera



Ref: TPL-MOUNT-BAR-H1

Mounting accessory for camera



Ref: TPL-MOUNT-BAR-V1

Mounting accessory




Ref: BMOUNT

Mounting accessory



Ref: SWIVEL-MOUNT

M12 female – 4 pins cable



2 meters	Ref: C-M12-4P-2M
5 meters	Ref: C-M12-4P-5M
10 meters	Ref: C-M12-4P-10M

Safety glasses



Ref: EYE-PROTECT

Features and presentations liable to modifications without prior notice. Ref.TS-040301-E1, 2024/01 Edition.

