

## SPOT SBAR UV 405

EASY TO USE POWERFUL LIGHTING SPOT

▷ ULTRAVIOLET LIGHTING

▷ HIGH POWERFUL SPOT LIGHT

▷ UV405

▷ GLUE AND PAINT DETECTION

▷ QUALITY CONTROL WITH CAMERA

# A VERY POWERFUL SPOT IN A BAR SHAPE.



**SOLID BODY**

COLOURLESS ANODIZED  
ALUMINUM

LIGHTING: **UV**

- ✓ Powerful lighting,
- ✓ continuous or strobe mode,
- ✓ UV led 405 nm.



**M12 CONNECTOR**

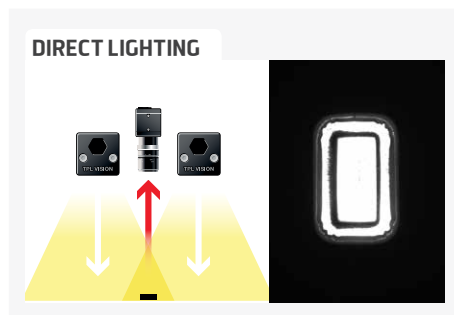
**Integrated  
current control  
power supply**

Either upward or downward, the Spot SBAR UV 405 can be fixed very easily, just like a bar, thanks to the groove located in the back of the body. In continuous or strobe modes, the Spot SBAR UV 405 is perfectly adapted to the control of circular areas, in confined environments.

Equipped with a Spot SBAR UV 405, your camera will then be able to lead an infallible quality control, detecting straight away the optical brighteners of the glues or paints that you would have used. The materials lacks and the assembly defects will be immediately highlighted.

## UV INFO

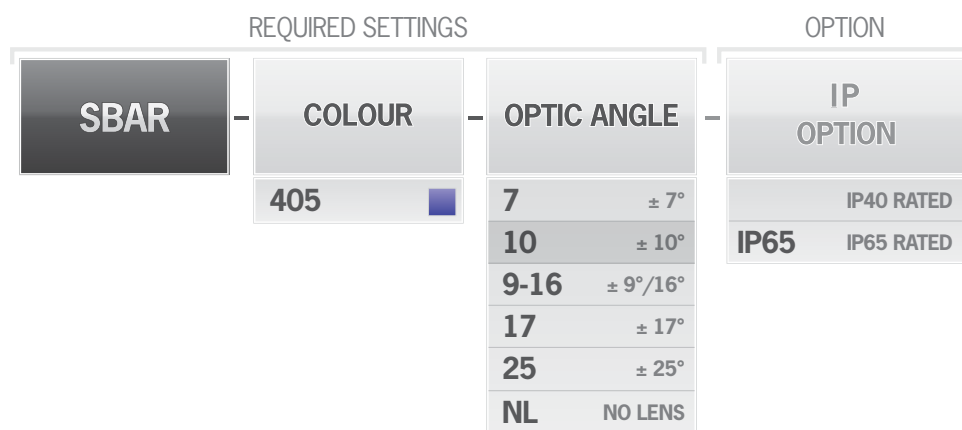
In the light spectrum, UV (ultra violet) rays are electromagnetic radiations situated between 280 and 400 nm (visible radiations: between 400 and 800 nm). What makes UV very interesting is the fact that, even if it is invisible for the naked eye, it can be observed by fluorescence: when some bodies are submitted to UV wavelengths, they emit a visible light. This is the principle of black light and of counterfeit notes detection. TPL Vision only uses UV belonging to the UV-A range.



## TECHNICAL SPECIFICATIONS

Electronics	
Power supply	24V $\pm 10\%$
Functioning mode	Continuous or strobe according to wiring
Maximum rising time	1.5 ms
Maximum falling time	1 ms
Wiring	M12 4 poles male connector
Max. Consumption	2 W
Optics	
Colour	UV 405
Standard lens	$\pm 10^\circ$
Mechanics	
Dimensions	47 x 47 x 75 mm
Useful surface	45 x 35 mm
Weight	200 g
Materials	Colourless anodized aluminum
Diffuser	Satin diffuser
Fixing	2 M8 nuts to insert in the back groove
Included add-ons	2 M8 nuts
Environment	
Operating temperature	0 - 40°C
Storage temperature	0 - 60°C
IP protection	IP 40
Labels	RoHS-CE-WEEE

## HOW TO BUILD YOUR REFERENCE



### EXAMPLES

SBAR LED UV 405  $\pm 10^\circ$  IP40 RATED:

### RESULTS

→ SBAR-405-10

SBAR LED UV 405  $\pm 25^\circ$  IP65 RATED:

→ SBAR-405-25-IP65

SBAR LED UV 405  $\pm 9^\circ/16^\circ$  IP40 RATED:

→ SBAR-405-9-16




**INFORMATION ABOUT LENSES**  
**NARROW ANGLE** = GIVE PRIORITY TO LIGHTING POWER  
**WIDE ANGLE** = GIVE PRIORITY TO HOMOGENEITY AND WIDE AREA



# ACCESSORIES

M12 female – 4 pins cable



2 meters	Ref: C-M12-4P-2M
5 meters	Ref: C-M12-4P-5M
10 meters	Ref: C-M12-4P-10M

Diffusers & polarizer



Opaque diffuser	Ref: DO-SBAR
Satin diffuser	Ref: DS-SBAR
Polarizer*	Ref: POL-SBAR

\* Only for standard and UV 405 versions.

Safety glasses



Ref: EYE-PROTECT

# MOUNTING DEVICES

Mounting accessory for camera



Ref: TPL-MOUNT-BAR-H1

Mounting accessory for camera



Ref: TPL-MOUNT-BAR-V1

Mounting accessory



Ref: BMOUNT

Mounting accessory



Ref: SWIVEL-MOUNT

Features and presentations liable to modifications without prior notice. Ref.TS-040401-C1, 2024/01 Edition.

