



## SQUARE LIGHT RGB

POWERFUL SQUARE SWIVEL LIGHTING

▶ MACHINE VISION APPLICATIONS

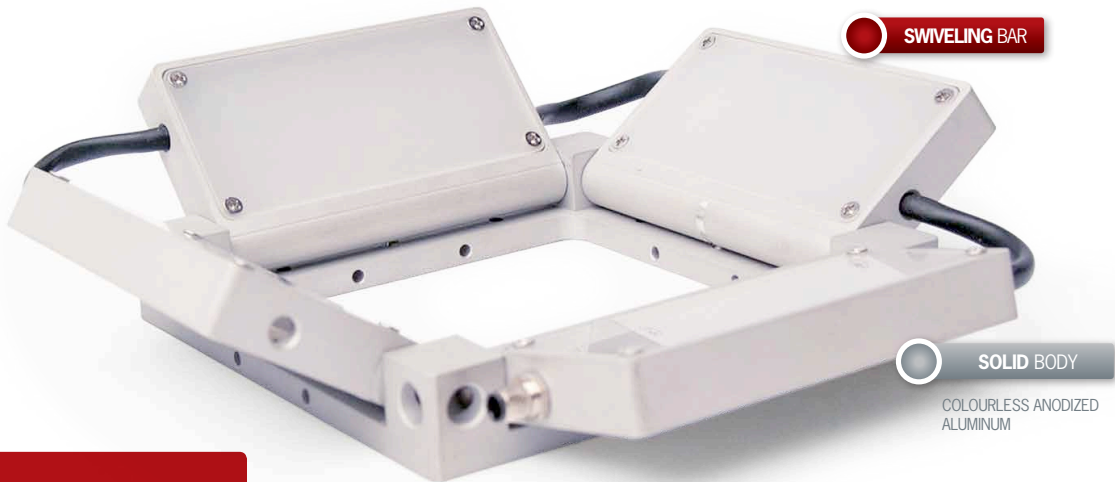
▶ LED LIGHTING SYSTEMS

▶ HIGH POWERFUL LED

▶ ADJUSTABLE LIGHTING

▶ DARK FIELD EFFECTS

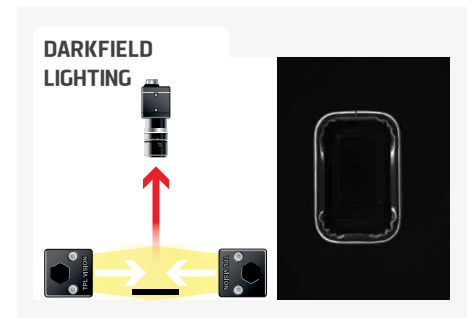
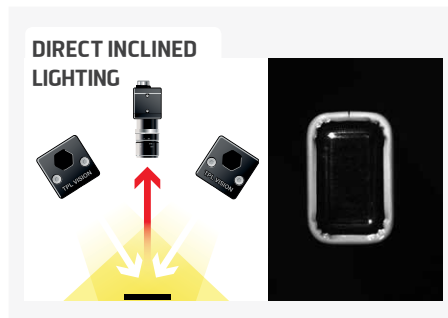
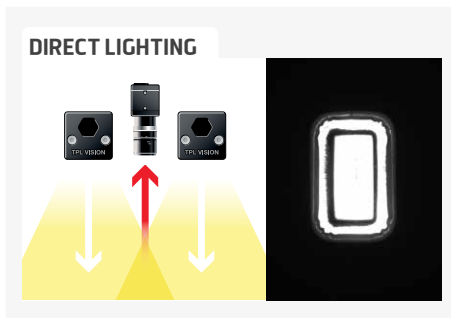
## RGB LIGHTING, FULLY ADJUSTABLE.



- ✓ Directive or darkfield lighting,
- ✓ 4 independent bars,
- ✓ RGB product.

TPL Vision's SQUARE LIGHT is renowned for its modularity : compound of 4 independent swiveling bars, it can be used in directive or darkfield lighting. The SQUARE LIGHT works in RGB, what can be very useful when the pieces to be lighted evolve over time, regarding the shape and the colours.

The SQUARE LIGHT is recommended to read codes, references and best before dates. Its is also particularly indicated to increase the contrasts of coloured products, coming from the perfume world, the food industry and the pharmaceutical sector.



## RELATED PRODUCTS

### M5 female – 4 pins cable

<b>2 meters</b>	Ref: C-M5-4P-2M
<b>5 meters</b>	Ref: C-M5-4P-5M
<b>10 meters</b>	Ref: C-M5-4P-10M

### Current controller

Ref: TPL-DRIVE-RGB

### Safety glasses



Ref: EYE-PROTECT

## TECHNICAL SPECIFICATIONS

Electronics	
Power supply	Use a current controller TPL Drive RGB
Functioning mode	Continuous
Wiring	M5 4 poles male connector
Max. Consumption	12 W
Optics	
Colour	RGB
Mechanics	
Dimensions (mm)	100x100x50
Weight (g)	300
Materials	Colourless anodized aluminum
Diffuser	White diffuser
Fixing	8 M3 screws
Environment	
Operating temperature	0 - 40°C
Storage temperature	0 - 60°C
IP protection	IP 40
Labels	RoHS-CE-WEEE

Features and presentations liable to modifications without prior notice. Ref.TS-060401-A2, 2019/12 Edition.

### TPL VISION UK

Brenchley House - School Road - Charing - Kent TN27 0JW - UK  
Tel. +44 (0)1738 310 392 - contact@tpl-vision.co.uk

[www.tpl-vision.com](http://www.tpl-vision.com)



### Other available documents :

- PDF, DWG, DXF, IGS, STEP & X\_Y DRAWINGS
- USER'S GUIDE

