



TINY'Z AD

COMPACT AND POWERFUL RING - 12 LEDS

▷ RING LED LIGHTING ▷ MACHINE VISION SYSTEM ▷ HIGH POWERFUL LED ▷ COMPACT LIGHTING ▷ QUALITY CONTROL WITH CAMERA

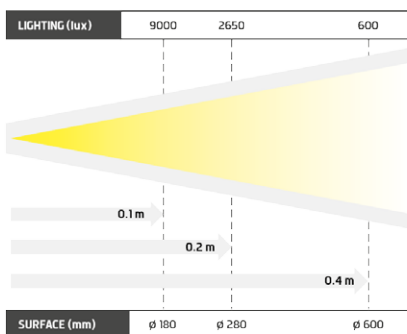
SO TINY AND SO POWERFUL.



- ✓ 12 high powerful leds,
- ✓ compact shape,
- ✓ continuous and strobe modes.

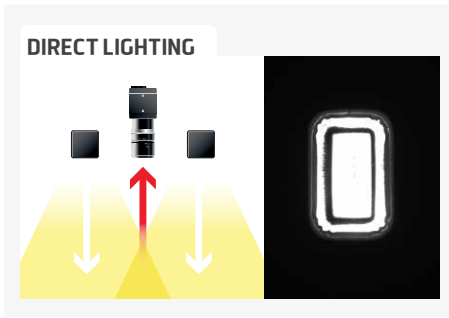


The Tiny'Z AD is a miniature ring equipped with 12 high powerful leds. It has been specially created for the diffuse lighting of circular areas. Working in continuous or strobe mode, the Tiny'Z AD is the ideal partner of your camera, whatever the tasks it has to deal with : The Tiny'Z AD is particularly dedicated to the surface defect checking, marking reading and presence/absence control.



Distance	0.1m		0.2m		0.4m	
Tinyz AD	9000 lux	∅ 180 mm	2650 lux	∅ 280 mm	600 lux	∅ 600 mm

Minimum guaranteed values (white lighting measures)



TECHNICAL SPECIFICATIONS

Electronics	
Power supply	350mA Use a supply with current control
Wiring	M5 4 points male connector
Max. Consumption	8 Watts
Optics	
Colour	White, Red, Green, Blue
Number of Leds	12
Mechanics	
Dimensions	Ø Int : 38 mm - Ø Ext : 66 mm
Width	15 mm
Weight (g)	70 g
Materials	Black anodized aluminum
Diffuser	Satin diffuser
Fixing	2 M3 screws
Environment	
Operating temperature	0 - 40°C
Storage temperature	0 - 60°C
IP protection	IP 40
Labels	RoHS-CE-WEEE

RELATED PRODUCTS

Ask for your add-ons, customized for the Tiny'z AD:

- wiring
- fixing hardware
- power supply
- diffusers
- safety glasses

MY CONTACT

.....

.....

.....

.....

.....

HOW TO BUILD YOUR REFERENCE

REQUIRED SETTINGS		OPTION
TINYZ-AD	COLOUR	DIFFUSER OPTION
	WHI <input type="checkbox"/>	DS SATIN
	630 <input type="checkbox"/>	DO OPAQUE
	525 <input type="checkbox"/>	POL POLARIZER ¹
	470 <input type="checkbox"/>	

¹ EXCEPT FOR INFRAROUGE 850

EXAMPLES :

TINY'Z AD WHITE LED SATIN DIFFUSER
 TINY'Z AD RED LED OPAQUE DIFFUSER
 TINY'Z AD BLUE LED POLARIZER

RESULTS :

→ TINYZ-AD-WHI-DS
 → TINYZ-AD-630-DO
 → TINYZ-AD-470-POL

Features and presentations liable to modifications without prior notice. D-1 version, 2019/06 Edition

TPL VISION UK

Brenchley House - School Road - Charing - Kent TN27 0JW - UK
 Tel. +44 (0)1738 310 392 - contact@tpl-vision.co.uk

www.tpl-vision.com



Other available documents :

- PDF, DWG, DXF, IGS, STEP & X_Y DRAWINGS
- USER'S GUIDE

