

## TRING

AUTONOMOUS COMPACT RING - 9 LEDS

▷ RING LED LIGHTING

▷ COMPACT AND AUTONOMOUS LIGHT

▷ HIGH POWERFUL LED

▷ MACHINE VISION SYSTEMS

▷ CONFINED ENVIRONMENT

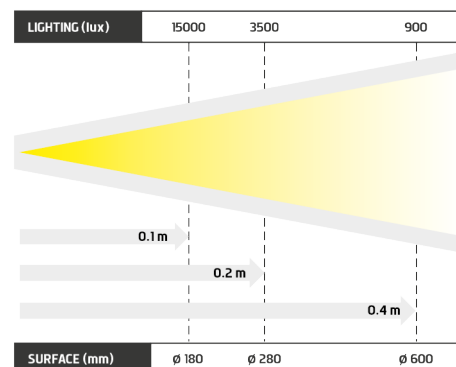
## COMPACT & POWERFUL RING, FOR CONFINED ENVIRONMENTS

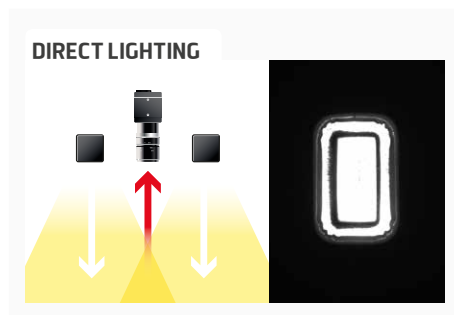


Equipped with 9 high powerful leds, the TRING is a miniature ring specially designed for the diffuse lighting of circular areas. It has a current control power supply that regulates the current intensity and consequently guarantees the lighting stability. Thanks to its M12 connector, it can be easily connected to any kind of production lines. Either in continuous or in strobe mode, the TRING perfectly goes along with a camera dedicated to quality control tasks: code reading, presence/absence checking, surface control...

Distance	0.1m		0.2m		0.4m	
TRING	15000 lux	ø 180 mm	3500 lux	ø 280 mm	900 lux	ø 600mm

Minimum guaranteed values (white lighting measures)





## TECHNICAL SPECIFICATIONS

Electronics	
Power supply	24 VDC $\pm 10\%$
Functioning mode	Continuous or strobe according to wiring
Maximum rising time	1.5 ms
Maximum falling time	1 ms
Wiring	M12 4 poles male connector
Max. consumption	6 W
Optics	
Colour	White, Red, Green, Blue, Infrared
Number of Leds	9
Lens by default	No lenses
Mechanics	
Dimensions	$\varnothing$ Int : 38 mm - $\varnothing$ Ext : 66 mm
Width	15 mm
Weight	70 g
Materials	Black anodized aluminum
Diffuser	Satin diffuser
Fixing	2 M3 screws
Environment	
Operating temperature	0 - 40°C
Storage temperature	0 - 60°C
IP protection	IP 40
Information	
Labels	RoHS / CE / UKCA / WEEE
Country of Origin	Made in France
Tariff Number	94054990

## HOW TO BUILD YOUR REFERENCE

REQUIRED SETTINGS

TRING

COLOUR

DIFFUSER

WHI
630
525
470
850

DS
DO
DT
POL

SATIN
OPAQUE
TRANSPARENT  
(NO DIFFUSION)
POLARISER\*

**EXAMPLES :**

TRING RED LED SATIN DIFFUSER → TRING-630-DS

TRING WHITE LED OPAQUE DIFFUSER → TRING-WHI-DO

\* EXCEPT FOR **INFRARED 850**

IT IS STRONGLY ADVISED TO USE THE TRING IN **STROBE MODE** TO PROLONG THE LIFETIME OF THE MATERIAL.

POLARISERS ARE **NOT COVERED BY WARRANTY**.

## ACCESSOIRES

### M12 female – 4 pins cable



<b>2 meters</b>	Ref: C-M12-4P-2M
<b>5 meters</b>	Ref: C-M12-4P-5M
<b>10 meters</b>	Ref: C-M12-4P-10M

### Diffusers & Polariser



<b>Opaque diffuser</b>	Ref: DO-TRING-TINYZ
<b>Satin diffuser</b>	Ref: DS-TRING-TINYZ
<b>Transparent diffuser</b>	Ref: DT-TRING-TINYZ
<b>Polariser for satin diffuser</b>	Ref: POL-DS-TRING
<b>Polariser for transparent diffuser</b>	Ref: POL-DT-TRING

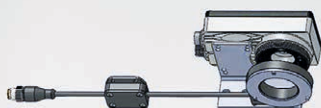
### Safety glasses



Ref: EYE-PROTECT

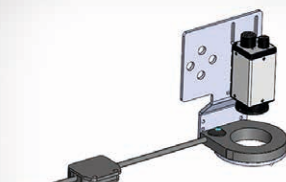
## MOUNTING DEVICES

### SRMOUNT V1



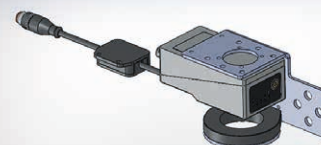
Ref: SRMOUNT V1

### SRMOUNT V2



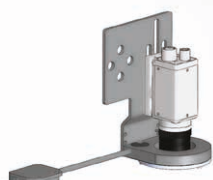
Ref: SRMOUNT V2

### SRMOUNT V3



Ref: SRMOUNT V3

### SRMOUNT V4



Ref: SRMOUNT V4

### SRMOUNT V5



Ref: SRMOUNT V5

### TPL-MOUNT-TRING-H1



Ref: TPL-MOUNT-TRING-H1

### TPL-MOUNT-TRING-V1



Ref: TPL-MOUNT-TRING-V1

**FOR CAMERA COMPATIBILITY, PLEASE VISIT OUR WEBSITE AT:**  
[www.tpl-vision.com/product-category/accessories/](http://www.tpl-vision.com/product-category/accessories/)

Features and presentations liable to modifications without prior notice. Ref.TS-030501-C5, 2025/04 Edition.

#### TPL VISION UK

Brenchley House - School Road - Charing - Kent TN27 0JW - UK  
 Tel. +44 (0)1738 310 392 - [contact@tpl-vision.co.uk](mailto:contact@tpl-vision.co.uk)

[www.tpl-vision.com](http://www.tpl-vision.com)



#### Other available documents :

- PDF, DWG, DXF, IGS, STEP & X\_Y DRAWINGS
- USER'S GUIDE

