

CLASSIC XBAR

POWERFUL LED LIGHTING BAR WITH SETTINGS

- ▷ MACHINE VISION APPLICATIONS
- ▷ LED LIGHTING SYSTEM
- ▷ HIGH POWERFUL LED
- ▷ DIRECT LIGHTING
- ▷ BAR WITH SETTINGS
- ▷ SOLID BODY

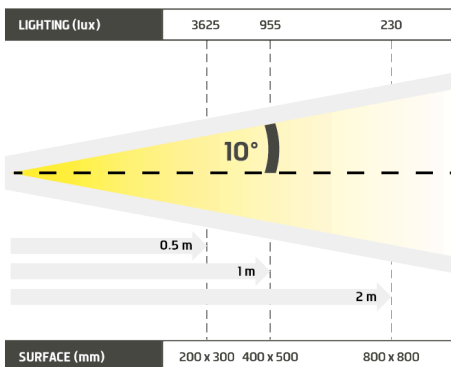
THE FAVORITE LIGHTING OF VISION SPECIALISTS.



- ✓ High powerful lighting,
- ✓ continuous or strobe mode,
- ✓ from 15 cm to 1 m 15.



Historically, the Classic XBAR is TPL Vision's standard bar. This direct powerful lighting is a proven solution, renowned among industrial vision professionals. You can choose between many settings : lighting intensity, functioning mode (continuous or strobe). The solid Classic XBAR is available in various sizes and Led colours, offers different settings and is compatible with standards. These are the reasons why the camera control lighting specialists acclaim the Classic XBAR.

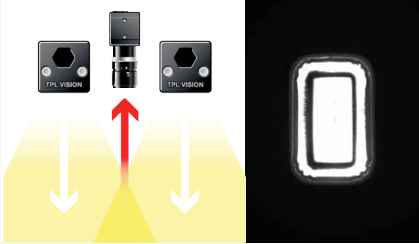


Distance	0.5m		1m		2m	
XBAR3	3625 lux	200 x 300 mm	955 lux	400 x 500 mm	230 lux	800 x 800 mm
XBAR6	6150 lux	200 x 300 mm	1775 lux	400 x 500 mm	445 lux	800 x 800 mm
XBAR12	8825 lux	200 x 375 mm	3055 lux	400 x 650 mm	830 lux	800 x 950 mm
XBAR18	9450 lux	200 x 525 mm	3880 lux	400 x 800 mm	1160 lux	800 x 1100 mm
XBAR24	9635 lux	200 x 675 mm	4380 lux	400 x 950 mm	1435 lux	800 x 1250 mm
XBAR36	9750 lux	200 x 975 mm	4680 lux	400 x 1250 mm	1795 lux	800 x 1550 mm
XBAR48	9765 lux	200 x 1275 mm	4775 lux	400 x 1550 mm	2055 lux	800 x 1850 mm

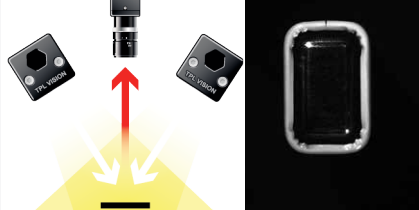
Minimum guaranteed values (white lighting measures)

▷ Demo for XBAR3 (useful length : 102 mm)

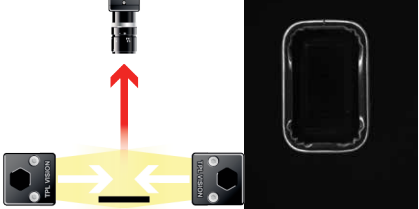
DIRECT LIGHTING



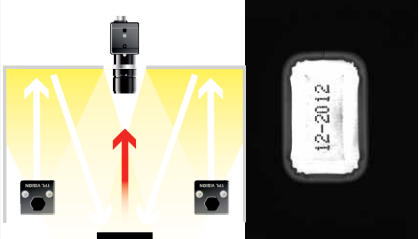
DIRECT INCLINED LIGHTING



DARKFIELD LIGHTING



DOMELIGHTING



RELATED PRODUCTS

Ask for your add-ons, customized for the Classic XBAR :

- wiring
- diffusers
- fixing hardware
- safety glasses

MY CONTACT

.....

.....

.....

.....

.....

.....

TECHNICAL SPECIFICATIONS

	3	6	12	18	24	36	48
Electronics							
Power supply	24 VDC +/-10%						
Functioning mode	Continuous or strobe (strobe by default)						
Maximum rising time	1.5ms						
Maximum falling time	1ms						
Wiring	M12 4 poles male connector						
Max. Consumption (W) (WHI, 630,525,470)	6	10	20	30	40	60	80
Max. Consumption (W) (850)	8	15	25	35	50	70	X
Optics							
Colour	White, Red, Green, Blue, Infrared (Available in UV 405)						
Number of Leds	3	6	12	18	24	36	48
Lens by default	± 10°						
Mechanics							
Total length (mm)	147	222	372	522 (IR 567)	717	1063	1417
Width x thickness	47 x 47 mm						
Useful length (mm)	102	175	325	475	625	925	1225
Useful width (mm)	39						
Weight (g)	300	460	680	920	1300	1560	1900
Body materials	Colourless anodized aluminum						
Diffuser	Transparent diffuser						
Fixing	2 M8 nuts to insert in the groove located on the back of the lighting						
Included add-ons	2 M8 nuts						
Environment							
Operating temperature	0 - 40°C						
Storage temperature	0 - 60°C						
IP protection	IP 40						
Labels	RoHS-CE-DEEE						

HOW TO BUILD ONE'S REFERENCE

XBAR	REQUIRED SETTINGS			OPTION
	NUMBER OF LEDS*	COLOUR	OPTIC ANGLE	DIFFUSER OPTION
	3	WHI	7 ± 7°	TRANSPARENT
	6	630	10 ± 10°	DO OPAQUE
	12	525	9-16 ± 9°/16°	DS SATIN
	18	470	17 ± 17°	POL POLARIZER
	24	850	25 ± 25°	
			NL NO LENS	

EXAMPLES :
 XBAR 3 WHITE LEDS ± 10° OPAQUE DIFFUSER : XBAR3-WHI-10-DO
 XBAR 12 RED LEDS ± 25° TRANSPARENT DIFFUSER : XBAR12-630-25
 XBAR 24 BLUE LEDS ± 9°/16° POLARIZER : XBAR24-470-9-16-POL

INFORMATION ABOUT LENSES
 NARROW ANGLE = GIVE PRIORITY TO LIGHTING POWER
 WIDE ANGLE = GIVE PRIORITY TO HOMOGENEITY AND WIDE AREA

TO LIGHT HOMOGENEOUS WIDE AREA TO GET BETTER LIGHTING POWER

* XBAR36 AND XBAR48 : PLEASE CONTACT US.

Features and presentations liable to modifications without prior notice. B-1 version, 2014/06 Edition

TPL VISION – 20 rue de Saint Philbert – 44118 LA CHEVROLIÈRE
 Tél. + 33 2 40 56 10 99 – Fax. + 33 2 40 56 42 89
 www.tpl-vision.net



Other available documents :

- PDF, DWG, DXF, IGS, STEP & X_Y DRAWINGS
- USER'S GUIDE

