

CLASSIC XBAR UV

POWERFUL LED LIGHTING BAR WITH SETTINGS

▷ MACHINE VISION SYSTEM

▷ HIGH POWERFUL LED BAR

▷ UV 405 LIGHTING

▷ OPTICAL BRIGHTENER

▷ QUALITY CONTROL WITH CAMERA

THE FAVORITE LIGHTING OF VISION SPECIALISTS.



SOLID BODY

COLOURLESS ANODIZED
ALUMINUM

LIGHTING: UV

- ✓ High powerful lighting,
- ✓ UV leds 405 nm,
- ✓ from 15 cm to 1 meter.

M12 CONNECTOR

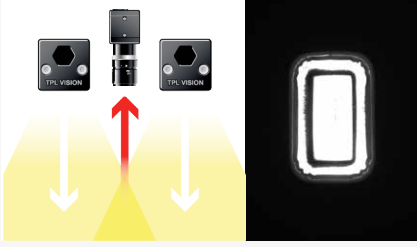
In TPL Vision's UV products range, the Classic XBAR UV appears to be the bar reference. Its high powerful directive lighting is widely acknowledged by machine vision professionals. The Classic XBAR UV combines both power and sturdiness, and can be set up in continuous and strobe mode.

Equipped with UV 405 leds, the Classic XBAR UV can easily highlight specialized glues and paints, so that the camera can rapidly lead an efficient detection. Whatever the job may be (control of manufacturing defects or reading of UV markings), the Classic XBAR UV is the ideal partner for your professional camera.

UV INFO

In the light spectrum, UV (ultra violet) rays are electromagnetic radiations situated between 280 and 400 nm (visible radiations: between 400 and 800 nm). What makes UV very interesting is the fact that, even if it is invisible for the naked eye, it can be observed by fluorescence: when some bodies are submitted to UV wavelengths, they emit a visible light. This is the principle of black light and of counterfeit notes detection. TPL Vision only uses UV belonging to the UV-A range (between 315 and 400 nm).

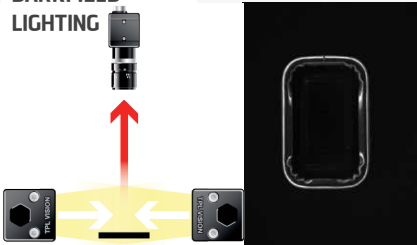
DIRECT LIGHTING



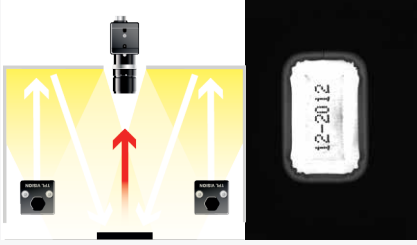
DIRECT INCLINED LIGHTING



DARKFIELD LIGHTING



DOMELIGHTING




TECHNICAL SPECIFICATIONS

| | 3 | 6 | 12 | 18 | 24 | 36 |
|------------------------|---|-----|-----|-----|------|------|
| Electronics | | | | | | |
| Power supply | 24 VDC +/-10% | | | | | |
| Functioning mode | Continuous (by default) or strobe (to set up) | | | | | |
| Maximum rising time | 1.5 ms | | | | | |
| Maximum falling time | 1 ms | | | | | |
| Wiring | M12 4 poles male connector | | | | | |
| Max. Consumption (W) | 8 | 15 | 25 | 35 | 50 | 70 |
| Optics | | | | | | |
| Colour | UV 405 | | | | | |
| Number of Leds | 3 | 6 | 12 | 18 | 24 | 36 |
| Lens by default | ± 10° | | | | | |
| Mechanics | | | | | | |
| Total length (mm) | 147 | 222 | 372 | 522 | 717 | 1063 |
| Width x thickness (mm) | 47 x 47 | | | | | |
| Useful length (mm) | 102 | 175 | 325 | 475 | 625 | 925 |
| Useful width (mm) | 39 | | | | | |
| Weight (g) | 300 | 460 | 680 | 920 | 1300 | 1560 |
| Body materials | Colourless anodized aluminum | | | | | |
| Diffuser | Satin diffuser | | | | | |
| Fixing | 2 M8 nuts to insert in the groove located on the back of the lighting | | | | | |
| Included add-ons | 2 M8 nuts | | | | | |
| Environment | | | | | | |
| Operating temperature | 0 - 40°C | | | | | |
| Storage temperature | 0 - 60°C | | | | | |
| IP protection | IP 40 | | | | | |
| Labels | RoHS-CE-DEEE | | | | | |

HOW TO BUILD ONE'S REFERENCE

REQUIRED SETTINGS

| XBAR | NUMBER OF LEDS* | COLOUR | OPTIC ANGLE |
|------|-----------------|---|---------------|
| | 3 | 405  | 7 ± 7° |
| | 6 | | 10 ± 10° |
| | 12 | | 9-16 ± 9°/16° |
| | 18 | | 17 ± 17° |
| | 24 | | 25 ± 25° |
| | | | NL NO LENS |

EXAMPLES

XBAR 3 LEDS UV 405 ± 10° : XBAR3-405-10
 XBAR 12 LEDS UV 405 ± 17° : XBAR12-405-17
 XBAR 24 LEDS UV 405 ± 9°/16° : XBAR24-405-9-16

RESULTS

XBAR3-405-10
 XBAR12-405-17
 XBAR24-405-9-16

RELATED PRODUCTS

Ask for your add-ons, customized for the Classic XBAR UV 405 :

- wiring
- fixing hardware
- safety glasses

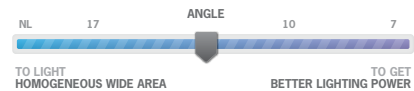
MY CONTACT

.....

.....

.....

INFORMATION ABOUT LENSES
 NARROW ANGLE = GIVE PRIORITY TO LIGHTING POWER
 WIDE ANGLE = GIVE PRIORITY TO HOMOGENEITY AND WIDE AREA



* XBAR36 : PLEASE CONTACT US.

Features and presentations liable to modifications without prior notice. A-1 version, 2014/03 Edition

TPL VISION – 20 rue de Saint Philbert – 44118 LA CHEVROLIÈRE
 Tél. + 33 2 40 56 10 99 – Fax. + 33 2 40 56 42 89
www.tpl-vision.net



Other available documents :

- PDF, DWG, DXF, IGS, STEP & X_Y DRAWINGS
- USER'S GUIDE

XBAR UV 405

