

PREAMBLE

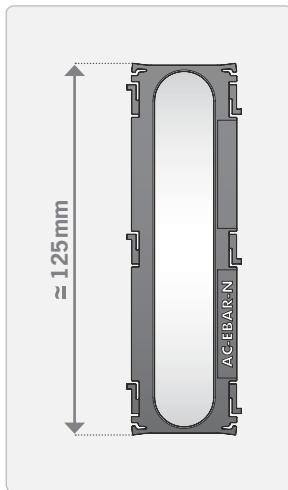
This Technical User Guide contains warnings and guidance for correct and safe operation of the product.

These instructions must be followed at all times. TPL Vision will not be held responsible for problems caused by using the product contrary to these instructions and the Warranty will be deemed invalid.

UNPACKING

Products are packed in our factory, using suitable materials for a safe transport through the usual means of transportation, in France and internationally. However, a damaged package must be reported to the carrier on delivery. Hand-written reservations must be indicated on the delivery order. Moreover, please send a letter or an email to TPL Vision as soon as possible (up to 24 hours after the delivery). If the transportation damage has not been stipulated on the delivery order and reported to TPL Vision in time, the package will not be taken back nor exchanged. To open the package, do not use any cutting blade to avoid damaging the product(s). Please use the delivered accessories, if needed (do not use any other products or equivalents to replace the delivered accessories).

DESCRIPTION



The Angle Changer product will **WIDEN THE BEAM** of your EBAR+ $\pm 7^\circ$ or M-EBAR product. References available:

- **AC-EBAR-N** – Narrow Beam,
- **AC-EBAR-M** – Medium Beam,
- **AC-EBAR-W** – Wide Beam,
- **AC-EBAR-L** – Linelight effect for Darkfield and Line Scan applications,
- **AC-EBAR-BK** – This is a black diffuser. It is used in testing to simulate using a smaller sized EBAR. Ex: Apply 1x AC-EBAR-BK to an EBAR-250-WHI-7 to make the illumination output of an EBAR-125-WHI-7. [**LAB USE ONLY**]
- **AC-EBAR-T** – This is a transparent window in the Angle Changer housing. This has no effect on the illumination angle. It is used to fill in spaces if you are creating multiple illumination angles along the length of an EBAR (eg. Curve effect).
- **AC-EBAR-____-P1** – Polarised version of Angle Changers. «Polarised» will be marked on product.

NOTE: 1 Angle Changer per 125mm of EBAR. Max EBAR size : 1250mm.



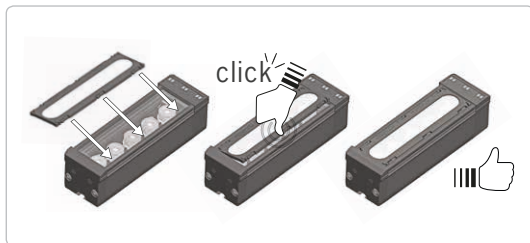
← PRODUCT CONFIGURATION IS MARKED ON THE ANGLE CHANGER.



NOTE: TPL Vision Angle Changers only increase the angle of the light.

They cannot focus the light more than that provided by the embedded lens.

■ HOW TO ATTACH THE ANGLE CHANGER TO YOUR BAR



- 1 – Put the springs on one side of the Angle Changer into the groove on the side of the window on the BAR,
- 2 – Firmly push the 3 springs with your thumb until they «click» into place*,
- 3 – Angle Changer is now secure. Turn on the illumination to use.

* Double check all springs have clicked in place. Angle Changers **MUST** be mounted flat for correct operation.

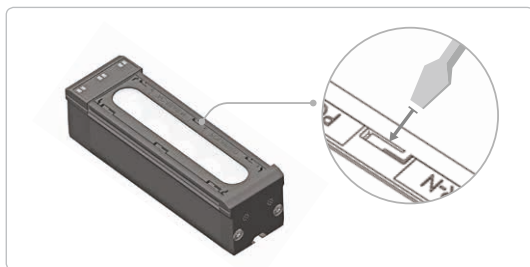
■ LARGER PRODUCTS



For larger products, simply start at one end & add them on in a line. Always check that all the springs are secure.

Max EBAR size : 1250mm.

■ HOW TO REMOVE THE ANGLE CHANGER FROM YOUR BAR



- 1 – Use a small flat head screwdriver as a wedging tool & place it into the gap between the spring and the BAR,
- 2 – Apply a light prising motion to pop the spring out of place,
- 3 – Repeat for remaining springs on the same side,
- 4 – Lift out of BAR.



Brenchley House, School Road
Charing, Kent TN27 0JW
United Kingdom

TPL VISION
IS AN **ISO 9001**
CERTIFIED MANUFACTURER

+44 (0)1738 310 392

contact@tpl-vision.co.uk

www.tpl-vision.com