



CLASSIC XBAR USER GUIDE

P4/4

■ USER SECURITY

Do respect the power supply voltages and the connection terminals.
Do not modify or dismantle all or part of the product.
Do not connect or clean when power is on.
Do not watch the lighting source directly, and follow the advice below :



- If the workstation enables it, interpose a filter that will stop the lighting radiation under fixed or adjustable frame between the source and the operator.
- When these measures cannot be implemented, supply the operators with glasses (class 4) available for sale at TPL Vision, or with a dedicated protective mask, that will stop the lighting radiation.
- Forbid or limit the direct access to the lighting source (exposure into the radiation axis).
- Establish a security perimeter so as to prevent the operators from approaching the lighting source beyond the recommendations of the manufacturer, as for eye irritation is concerned.
- In any case, ensure that the chosen means properly reduce the exposition quantities (features of screens or glasses to be chosen, according to the wavelengths that the operators are exposed to).

■ EQUIPMENT MAINTENANCE

CLEANING (when the product is switched off)

Please use a soft and dry cloth. Do not use any abrasive material. Do not use any cleaning solvent or aggressive chemical product. TPL Vision recommends to use iso-propyl alcohol.

■ EQUIPMENT SECURITY

WARNING : when the product is used on a continuous basis, the maximum authorized electric current corresponds to the standard settings. It means that each power supply unit must be set as indicated in the table below. A higher setting will lead to the overheating of the product.

Standard settings of electric current on switches	WHITE, COLOR, UV	IR
XBAR 3	350 mA	1 A
XBAR 6	350 mA	1 A
XBAR 12	700 mA	1 A
XBAR 18	1 A	700 mA
XBAR 24	700 mA	700 mA
XBAR 36	1 A	1 A
XBAR 48	700 mA	

Version E-1, 2019/10 edition.

Features and presentations liable to changes without notice.



CLASSIC XBAR USER GUIDE

PREAMBLE

This notice includes all the advice and warnings that enables a correct set up and a safe use of the product. TPL Vision can not be responsible for the bad use of the notice. If so, TPL Vision cancels the guarantee's effects.



■ UNPACKING

Products are packed in our factory, using suitable materials for a safe transport through the usual means of transportation, in France and internationally. However, a damaged package must be reported to the carrier on delivery. Hand-written reservations must be indicated on the delivery order. Moreover, please send a letter or an email to TPL Vision as soon as possible (up to 24 hours after the delivery). If the transportation damage has not been stipulated on the delivery order and reported to TPL Vision in time, the package will not be taken back nor exchanged. To open the package, do not use any cutting blade to avoid damaging the product(s). Please use the delivered accessories, if needed (do not use any other products or equivalents to replace the delivered accessories).

■ RISK CLASS

The EN-62471 norm about lighting fluxes enables the classification of led lightings in 4 distinct groups, according to their hazardousness degree. Please find below an indicative table, recapitulating the classes of risk for our standard products.

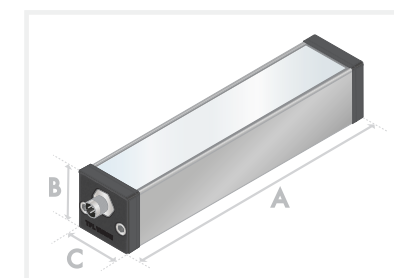
Colour	Class	Risk
White WHI, Green 525 nm, Red 630 nm	0	none
UV 405 nm, Blue 470 nm, IR 850 nm	1	low
UV 365 nm	2	moderate
UV 385 nm	3	high

In all cases, TPL Vision recommends the use of **the protection glasses** that are listed in its catalog.

For more information about photo-biological risks, do not hesitate to contact us.

■ DIMENSIONS

	Length (mm)	Height (mm)	Width (mm)
	A (white, colours)	A (Infrared)	B C
XBAR3	147	147	47
XBAR6	222	222	47
XBAR12	372	372	47
XBAR18	522	567	47
XBAR24	717	717	47
XBAR36	1063	1063	47
XBAR48	1417	1417	47



TPL VISION UK

Brenchley House – School Road – Charing – Kent TN27 0JW – UK
 Tel. +44 (0)1738 310 392 – www.tpl-vision.com



CLASSIC XBAR USER GUIDE

P2/4

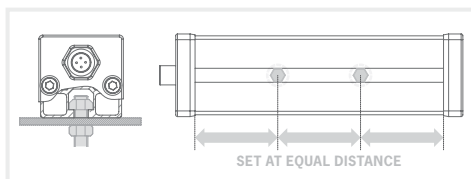
P3/4



FIXING

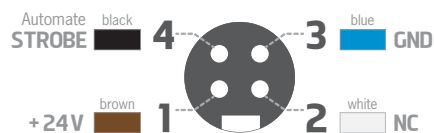
During the set up, the light has to be switched off and unplugged. Please use the 2 delivered nuts and insert them in the groove located in the back of the lighting. The lighting will be better fixed if you spread the attachment points as indicated on the scheme.

We recommend the using of M8 screws (not supplied) with a tightening torque from 0.5 to 1.5 Nm. We also recommend the use of a threadlocker (not supplied) to avoid any risk of loosening.



CONNECTION

M12 4 male points



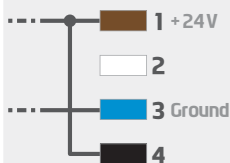
In STROBE mode:
STROBE entry = 24V
or 5V TTL -> light on

FRONT VIEW
OF THE CONNECTOR

STROBE MODE CONNECTION



CONTINUOUS MODE CONNECTION



SETTINGS

How to correctly set up the product :

- The product disassembly is exclusively authorized for this adjustment.
- It can not be done on a IP version.
- Please follow the instructions below :

- Switch off the product or unplug the device.
- Thanks to an Allen key N°4, dismantle the black end-piece at the opposite of the connector.
- Slightly move the diffusing part in order to free the switches on the connector's side.
- With the help of a tiny sharp instrument, change the position of the small switches.
- Close the product.
- Switch on.

1	2	Current
OFF	OFF	350 mA
ON	OFF	700 mA
OFF	ON	700 mA
ON	ON	1A

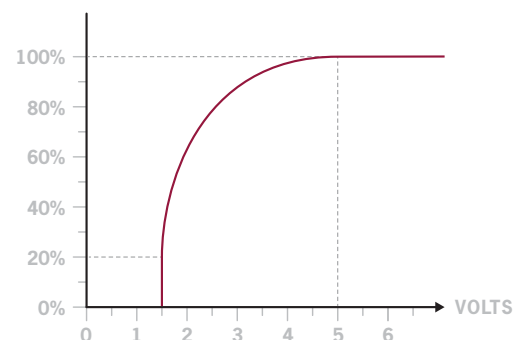


STROBE Activation:
ON = activated (by default)
OFF = not activated

Not used

CONTROL

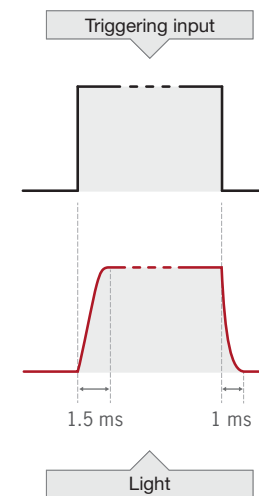
DIMMING



Potential dimming between 1.5 and 5 Volts.

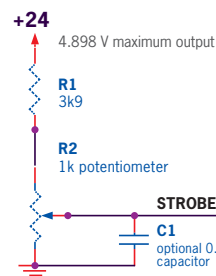
Above 5 Volts, the product reaches 100% of its lighting power.

STROBE MODE

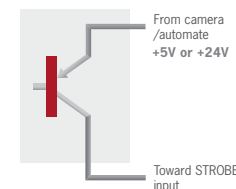


Power supply : 24V +/-10%
Strobe input : 24V or 5V TTL

EXTERNAL DIMMING CONFIGURATION



PNP-LIKE AUTOMATON OUTPUT



NPN-LIKE AUTOMATON OUTPUT

